

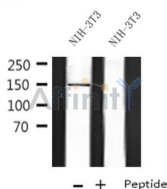
## NCoA3 Ab

Cat.#: AF4055  
 Size: 50ul,100ul,200ul

Concn.: 1mg/ml  
 Source: Rabbit

Mol.Wt.: 155kDa  
 Clonality: Polyclonal

- Application:** WB 1:1000-3000
- Reactivity:** Human,Mouse
- Purification:** The antiserum was purified by peptide affinity chromatography using SulfoLink™ Coupling Resin (Thermo Fisher Scientific).
- Specificity:** NCoA3 Ab detects endogenous levels of total NCoA3 protein.
- Immunogen:** A synthesized peptide derived from human NCoA3 .
- Uniprot:** Q9Y6Q9
- Subcellular Location:** Cytoplasm. Nucleus. Mainly cytoplasmic and weakly nuclear. Upon TNF activation and subsequent phosphorylation, it translocates from the cytoplasm to the nucleus.
- Tissue Specificity:** Widely expressed. High expression in heart, skeletal muscle, pancreas and placenta. Low expression in brain, and very low in lung, liver and kidney.
- Similarity:** Contains three Leu-Xaa-Xaa-Leu-Leu (LXXLL) motifs. Motifs 1 and 2 are essential for the association with nuclear receptors, and constitute the RID domain (Receptor-interacting domain).Belongs to the SRC/p160 nuclear receptor coactivator family.
- Storage Condition and Buffer:** Rabbit IgG in phosphate buffered saline , pH 7.4, 150mM NaCl, 0.02% sodium azide and 50% glycerol.Store at -20 °C.Stable for 12 months from date of receipt.



Western blot analysis NCoA3 using NIH-3T3 whole cell lysates

**IMPORTANT:** For western blot, incubate membrane with diluted primary Ab in 5% w/v milk , 1X TBS, 0.1% Tween@20 at 4°C with gentle shaking, overnight.



**Affinity Biosciences**

website: [www.affbiotech.com](http://www.affbiotech.com)

order: [order@affbiotech.com](mailto:order@affbiotech.com)

---

For Research Use Only. Not for use in diagnostic and therapeutic procedures. Not for resale without express authorization.