

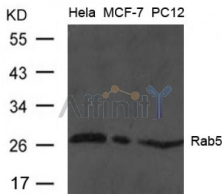
Rab5 Ab

Cat.#: AF4073
Size: 50ul,100ul,200ul

Concn.: 1mg/ml
Source: Rabbit

Mol.Wt.: 25kd
Clonality: Polyclonal

Application:	WB 1:500-1:1000
Reactivity:	Human,Mouse,Rat
Purification:	The antiserum was purified by peptide affinity chromatography using SulfoLink™ Coupling Resin (Thermo Fisher Scientific).
Specificity:	The Ab detects endogenous level of total Rab5 protein.
Immunogen:	Peptide sequence around aa.188~192(N-P-G-A-N) derived from Human Rab5.
Uniprot:	P20339
Description:	Required for the fusion of plasma membranes and early endosomes.
Subcellular Location:	Cell membrane. Early endosome membrane. Melanosome. Enriched in stage I melanosomes.
Similarity:	Belongs to the small GTPase superfamily. Rab family.
Storage Condition and Buffer:	Supplied at 1.0mg/mL in phosphate buffered saline (without Mg ²⁺ and Ca ²⁺), pH 7.4, 150mM NaCl, 0.02% sodium azide and 50% glycerol.



Western blot analysis of extract from HeLa, MCF and PC12 cells using Rab5 Ab

IMPORTANT: For western blot, incubate membrane with diluted primary Ab in 5% w/v milk, 1X TBS, 0.1% Tween@20 at 4°C with gentle shaking, overnight.

For Research Use Only. Not for use in diagnostic and therapeutic procedures. Not for resale without express authorization.