

Blimp-1 Ab

Cat.#: AF4088
Size: 50ul,100ul,200ul

Concn.: 1mg/ml
Source: Rabbit

Mol.Wt.: 95 100kd
Clonality: Polyclonal

Application: WB 1:500-1:1000 IF 1:100-400

Reactivity: Human, Mouse, Rat

Purification: The antiserum was purified by peptide affinity chromatography using SulfoLink™ Coupling Resin (Thermo Fisher Scientific).

Specificity: The Ab detects endogenous levels of total Blimp-1 protein.

Immunogen: Peptide sequence around aa.124~128(D-T-V-P-K) derived from Human Blimp-1.

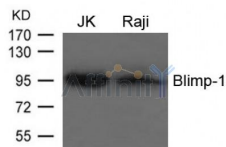
Uniprot: O75626

Description: Transcriptional repressor that binds specifically to the PRDI element in the promoter of the beta-interferon gene. Drives the maturation of B-lymphocytes into Ig secreting cells. NANOS3 function in human germ cell development.

Subcellular Location: Nucleus. Cytoplasm.

Similarity: Belongs to the class V-like SAM-binding methyltransferase superfamily.

Storage Condition and Buffer: Supplied at 1.0mg/mL in phosphate buffered saline (without Mg2+ and Ca2+), pH 7.4, 150mM NaCl, 0.02% sodium azide and 50% glycerol.



Western blot analysis of extracts from JK and Raji cells using Blimp-1 Ab



AF4088 staining HEPG2 cells by ICC/IF. Cells were fixed with PFA and permeabilized in 0.1% saponin prior to blocking in 10% serum for 45 minutes at 37°C. The primary Ab was diluted 1/200 and incubated with the sample for 1 hour at 37°C. A Alexa Fluor 594 conjugated goat polyclonal to rabbit IgG (H+L), diluted 1/600 was used as secondary Ab.

IMPORTANT: For western blot, incubate membrane with diluted primary Ab in 5% w/v milk , 1X TBS, 0.1% Tween@20 at 4°C with gentle shaking, overnight.

For Research Use Only. Not for use in diagnostic and therapeutic procedures. Not for resale without express authorization.