

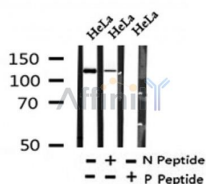
Phospho-PER2(Ser662) Ab

Cat.#: AF4301
Size: 50ul,100ul,200ul

Concn.: 1mg/ml
Source: Rabbit

Mol.Wt.: 137kDa
Clonality: Polyclonal

Application:	WB 1:500-1:2000
Reactivity:	Human, Mouse, Rat
Purification:	The Ab is from purified rabbit serum by affinity purification via sequential chromatography on phospho- and non-phospho-peptide affinity columns.
Specificity:	Phospho-PER2(Ser662) Ab detects endogenous levels of PER2 only when phosphorylated at Ser662.
Immunogen:	A synthesized peptide derived from human PER2 around the phosphorylation site of Ser662.
Uniprot:	O15055
Subcellular Location:	Nucleus. Cytoplasm. Mainly nuclear. Nucleocytoplasmic shuttling is effected by interaction with other circadian core oscillator proteins and/or by phosphorylation. Retention of PER1 in the cytoplasm occurs through PER1-PER2 heterodimer formation or by interaction with CSNK1E and/or phosphorylation which appears to mask the PER nuclear localization signal. Also translocated to the nucleus by CRY1 or CRY2.
Tissue Specificity:	Widely expressed. Found in heart, brain, placenta, lung, liver, skeletal muscle, kidney and pancreas. High levels in skeletal muscle and pancreas. Low levels in lung. Isoform 2 is expressed in keratinocytes (at protein level).
Storage Condition and Buffer:	Rabbit IgG in phosphate buffered saline , pH 7.4, 150mM NaCl, 0.02% sodium azide and 50% glycerol. Store at -20 °C. Stable for 12 months from date of receipt.



Western blot analysis of Phospho-PER2(Ser662) in lysates of HeLa , using Phospho-PER2(Ser662) Ab(AF4301).

in 5% w/v milk , 1X TBS, 0.1% Tween@20 at 4°C with gentle shaking,
overnight.

For Research Use Only. Not for use in diagnostic and therapeutic
procedures. Not for resale without express authorization.