

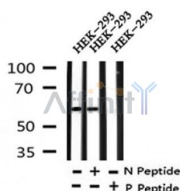
Phospho-Occludin (Ser507) Ab

Cat.#: AF4306
Size: 50ul,100ul,200ul

Concn.: 1mg/ml
Source: Rabbit

Mol.Wt.: 62kDa
Clonality: Polyclonal

Application:	WB 1:500-1:2000
Reactivity:	Human,Mouse,Rat
Purification:	The Ab is from purified rabbit serum by affinity purification via sequential chromatography on phospho- and non-phospho-peptide affinity columns.
Specificity:	Phospho-Occludin (Ser507) Ab detects endogenous levels of Occludin only when phosphorylated at Ser507 .
Immunogen:	A synthesized peptide derived from human Occludin around the phosphorylation site of Ser507 .
Uniprot:	Q16625
Subcellular Location:	Membrane. Cell junction > tight junction.
Tissue Specificity:	Localized at tight junctions of both epithelial and endothelial cells. Highly expressed in kidney. Not detected in testis.
Similarity:	The C-terminal is cytoplasmic and is important for interaction with ZO-1. Sufficient for the tight junction localization. Involved in the regulation of the permeability barrier function of the tight junction (By similarity). The first extracellular loop participates in an adhesive interaction.Belongs to the ELL/occludin family.
Storage Condition and Buffer:	Rabbit IgG in phosphate buffered saline , pH 7.4, 150mM NaCl, 0.02% sodium azide and 50% glycerol.Store at -20 °C.Stable for 12 months from date of receipt.



Western blot analysis of Phospho-Occludin (Ser507) in lysates of HEK-293, using Phospho-Occludin (Ser507) Ab(AF4306).

IMPORTANT: For western blot, incubate membrane with diluted primary Ab in 5% w/v milk , 1X TBS, 0.1% Tween@20 at 4°C with gentle shaking, overnight.



Affinity Biosciences

website: www.affbiotech.com

order: order@affbiotech.com

For Research Use Only. Not for use in diagnostic and therapeutic procedures. Not for resale without express authorization.