

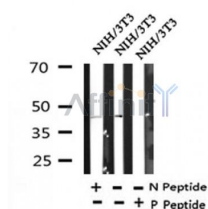
Phospho-TAZ (Ser89) Ab

Cat.#: AF4315
Size: 50ul,100ul,200ul

Concn.: 1mg/ml
Source: Rabbit

Mol.Wt.: 44kDa
Clonality: Polyclonal

Application:	WB 1:500-1:2000
Reactivity:	Human,Mouse,Rat
Purification:	The Ab is from purified rabbit serum by affinity purification via sequential chromatography on phospho- and non-phospho-peptide affinity columns.
Specificity:	Phospho-TAZ (Ser89) Ab detects endogenous levels of TAZ only when phosphorylated at Ser89.
Immunogen:	A synthesized peptide derived from human TAZ around the phosphorylation site of Ser89.
Uniprot:	Q9GZV5
Subcellular Location:	Nucleus. Cytoplasm. Concentrates along specific portions of the plasma membrane, and accumulates in punctate nuclear bodies. When phosphorylated, is retained in cytoplasm by YWHAZ. Can be retained in the nucleus by MED15.
Tissue Specificity:	Highly expressed in kidney, heart, placenta and lung. Expressed in the thyroid tissue.
Similarity:	The PDZ-binding motif is essential for stimulated gene transcription. It localizes the protein into both punctate nuclear foci and plasma membrane-associated complexes (By similarity). Binds to transcription factors via its WW domain.
Storage Condition and Buffer:	Rabbit IgG in phosphate buffered saline , pH 7.4, 150mM NaCl, 0.02% sodium azide and 50% glycerol. Store at -20 °C. Stable for 12 months from date of receipt.



Western blot analysis of Phospho-TAZ (Ser89) in lysates of NIH/3T3, using Phospho-TAZ (Ser89) Ab(AF4315).

in 5% w/v milk , 1X TBS, 0.1% Tween@20 at 4°C with gentle shaking,
overnight.

For Research Use Only. Not for use in diagnostic and therapeutic
procedures. Not for resale without express authorization.