

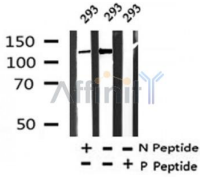
Phospho-KIBRA(Ser947) Ab

Cat.#: AF4317
Size: 50ul,100ul,200ul

Concn.: 1mg/ml
Source: Rabbit

Mol.Wt.: 135kDa
Clonality: Polyclonal

Application:	WB 1:500-1:2000
Reactivity:	Human,Mouse,Rat
Purification:	The Ab is from purified rabbit serum by affinity purification via sequential chromatography on phospho- and non-phospho-peptide affinity columns.
Specificity:	Phospho-KIBRA(Ser947) Ab detects endogenous levels of KIBRA only when phosphorylated at Ser947.
Immunogen:	A synthesized peptide derived from human KIBRA around the phosphorylation site of Ser947.
Uniprot:	Q8IX03
Subcellular Location:	Cytoplasm. Cytoplasm > perinuclear region. Nucleus. Cell projection > ruffle membrane. Note: Co-localizes with PRKCZ in the perinuclear region.
Tissue Specificity:	Expressed in mammary epithelial cells and breast cancer cell lines. Found in the luminal epithelium surrounding the ducts in the normal breast. In the brain, expressed in somatodendritic compartment of neurons in the cortex and hippocampus and in the cerebellum it is found in the Purkinje cells and some granule cells (at protein level). Detected in brain, heart, colon and kidney. In the kidney, expressed in glomerular podocytes, in some tubules and in the collecting duct.
Similarity:	The C2-domain mediates homodimerization. It is a calcium-sensitive lipid-binding domain with preference for PI3P.Belongs to the WWC family. KIBRA subfamily.
Storage Condition and Buffer:	Rabbit IgG in phosphate buffered saline , pH 7.4, 150mM NaCl, 0.02% sodium azide and 50% glycerol.Store at -20 °C.Stable for 12 months from date of receipt.



Western blot analysis of Phospho-KIBRA(Ser947) in lysates of 293 , using Phospho-KIBRA(Ser947) Ab(AF4317).

IMPORTANT: For western blot, incubate membrane with diluted primary Ab in 5% w/v milk , 1X TBS, 0.1% Tween@20 at 4°C with gentle shaking, overnight.

For Research Use Only. Not for use in diagnostic and therapeutic procedures. Not for resale without express authorization.