

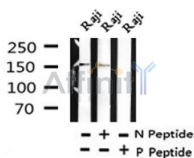
Phospho-SOS1(Ser1082) Ab

Cat.#: AF4321
Size: 50ul,100ul,200ul

Concn.: 1mg/ml
Source: Rabbit

Mol.Wt.: 152kDa
Clonality: Polyclonal

Application:	WB 1:500-1:2000
Reactivity:	Human,Mouse,Rat
Purification:	The Ab is from purified rabbit serum by affinity purification via sequential chromatography on phospho- and non-phospho-peptide affinity columns.
Specificity:	Phospho-SOS1(Ser1082) Ab detects endogenous levels of SOS1 only when phosphorylated at Ser1082.
Immunogen:	A synthesized peptide derived from human SOS1 around the phosphorylation site of Ser1082.
Uniprot:	Q07889
Tissue Specificity:	Expressed in gingival tissues.
Storage Condition and Buffer:	Rabbit IgG in phosphate buffered saline , pH 7.4, 150mM NaCl, 0.02% sodium azide and 50% glycerol.Store at -20 °C.Stable for 12 months from date of receipt.



Western blot analysis of Phospho-SOS1(Ser1082) in lysates of Raji , using Phospho-SOS1(Ser1082) Ab(AF4321).

IMPORTANT: For western blot, incubate membrane with diluted primary Ab in 5% w/v milk , 1X TBS, 0.1% Tween@20 at 4°C with gentle shaking, overnight.

For Research Use Only. Not for use in diagnostic and therapeutic procedures. Not for resale without express authorization.