

## Phospho-GRAP2(Thr262) Ab

Cat.#: AF4322	Concn.: 1mg/ml	Mol.Wt.: 25,38 kDa
Size: 50ul,100ul,200ul	Source: Rabbit	Clonality: Polyclonal

**Application:** WB 1:500-1:2000

**Reactivity:** Human,Mouse,Rat

**Purification:** The Ab is from purified rabbit serum by affinity purification via sequential chromatography on phospho- and non-phospho-peptide affinity columns.

**Specificity:** Phospho-GRAP2(Thr262) Ab detects endogenous levels of GRAP2 only when phosphorylated at Thr262.

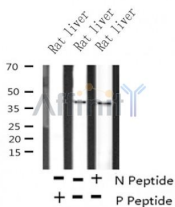
**Immunogen:** A synthesized peptide derived from human GRAP2 around the phosphorylation site of Thr262.

**Uniprot:** O75791

**Subcellular Location:** Endosome;Nucleus;

**Similarity:** Belongs to the GRB2/sem-5/DRK family.

**Storage Condition and Buffer:** Rabbit IgG in phosphate buffered saline , pH 7.4, 150mM NaCl, 0.02% sodium azide and 50% glycerol.Store at -20 °C.Stable for 12 months from date of receipt.



Western blot analysis of Phospho-GRAP2(Thr262) in lysates of Rat liver , using Phospho-GRAP2(Thr262) Ab(AF4322).

**IMPORTANT:** For western blot, incubate membrane with diluted primary Ab in 5% w/v milk , 1X TBS, 0.1% Tween@20 at 4°C with gentle shaking, overnight.

For Research Use Only. Not for use in diagnostic and therapeutic procedures. Not for resale without express authorization.