

Phospho-ARD1(Ser199) Ab

Cat.#: AF4334	Concn.: 1mg/ml	Mol.Wt.: 28kDa
Size: 50ul,100ul,200ul	Source: Rabbit	Clonality: Polyclonal

Application: WB 1:500-1:2000

Reactivity: Human,Mouse,Rat

Purification: The Ab is from purified rabbit serum by affinity purification via sequential chromatography on phospho- and non-phospho-peptide affinity columns.

Specificity: Phospho-ARD1(Ser199) Ab detects endogenous levels of ARD1 only when phosphorylated at Ser199.

Immunogen: A synthesized peptide derived from human ARD1 around the phosphorylation site of Ser199.

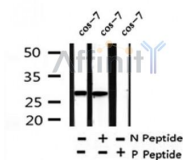
Uniprot: Q12972

Subcellular Location: Nucleus;

Tissue Specificity: Ubiquitously expressed, with highest levels in heart and skeletal muscle, followed by brain, placenta, lung, liver and pancreas. Less abundant in kidney. The concentration and ratio between isoforms is cell-type dependent. Isoform Alpha (>90%) and isoform Beta were found in brain, heart and kidney. Isoform Gamma is mainly found in B-cells and T-lymphocytes, and has been found in 293 embryonic kidney cells.

Similarity: Has a basic N- and C-terminal and an acidic central domain.The FHA domain mediates interactions with threonine-phosphorylated MELK.

Storage Condition and Buffer: Rabbit IgG in phosphate buffered saline , pH 7.4, 150mM NaCl, 0.02% sodium azide and 50% glycerol.Store at -20 °C.Stable for 12 months from date of receipt.



Western blot analysis of Phospho-ARD1(Ser199) in lysates of cos-7, using Phospho-ARD1(Ser199) Ab(AF4334).

IMPORTANT: For western blot, incubate membrane with diluted primary Ab in 5% w/v milk , 1X TBS, 0.1% Tween@20 at 4°C with gentle shaking, overnight.

For Research Use Only. Not for use in diagnostic and therapeutic procedures. Not for resale without express authorization.