

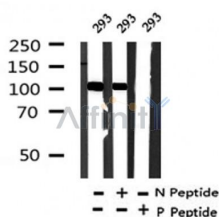
Phospho-CYLD(Ser422) Ab

Cat.#: AF4337
Size: 50ul,100ul,200ul

Concn.: 1mg/ml
Source: Rabbit

Mol.Wt.: 108kDa
Clonality: Polyclonal

Application:	WB 1:500-1:2000
Reactivity:	Human,Mouse,Rat
Purification:	The Ab is from purified rabbit serum by affinity purification via sequential chromatography on phospho- and non-phospho-peptide affinity columns.
Specificity:	Phospho-CYLD(Ser422) Ab detects endogenous levels of CYLD only when phosphorylated at Ser422.
Immunogen:	A synthesized peptide derived from human CYLD around the phosphorylation site of Ser422.
Uniprot:	Q9NQC7
Subcellular Location:	Cytoplasm. Cytoplasm > perinuclear region. Cytoplasm > cytoskeleton. Cell membrane. Detected at the microtubule cytoskeleton during interphase. Detected at the midbody during telophase.
Tissue Specificity:	Detected in fetal brain, testis, and skeletal muscle, and at a lower level in adult brain, leukocytes, liver, heart, kidney, spleen, ovary and lung. Isoform 2 is found in all tissues except kidney.
Similarity:	Belongs to the peptidase C19 family.
Storage Condition and Buffer:	Rabbit IgG in phosphate buffered saline , pH 7.4, 150mM NaCl, 0.02% sodium azide and 50% glycerol.Store at -20 °C.Stable for 12 months from date of receipt.



Western blot analysis of Phospho-CYLD(Ser422) in lysates of 293 , using Phospho-CYLD(Ser422) Ab(AF4337).

IMPORTANT: For western blot, incubate membrane with diluted primary Ab in 5% w/v milk , 1X TBS, 0.1% Tween@20 at 4°C with gentle shaking, overnight.



Affinity Biosciences

website: www.affbiotech.com

order: order@affbiotech.com

For Research Use Only. Not for use in diagnostic and therapeutic procedures. Not for resale without express authorization.