

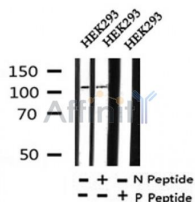
## Phospho-KSR2(Thr497) Ab

Cat.#: AF4342  
Size: 50ul, 100ul, 200ul

Concn.: 1mg/ml  
Source: Rabbit

Mol.Wt.: 115kDa  
Clonality: Polyclonal

Application:	WB 1:500-1:2000
Reactivity:	Human, Mouse, Rat
Purification:	The Ab is from purified rabbit serum by affinity purification via sequential chromatography on phospho- and non-phospho-peptide affinity columns.
Specificity:	Phospho-KSR2(Thr497) Ab detects endogenous levels of KSR2 only when phosphorylated at Thr497.
Immunogen:	A synthesized peptide derived from human KSR2 around the phosphorylation site of Thr497.
Uniprot:	Q6VAB6
Subcellular Location:	Cytoplasm. Membrane.
Tissue Specificity:	Mainly expressed in brain and kidney.
Similarity:	The protein kinase domain is predicted to be catalytically inactive and seems to have very low intrinsic kinase activity. This low kinase activity can be increased by interaction with BRAF. Belongs to the protein kinase superfamily. TKL Ser/Thr protein kinase family.
Storage Condition and Buffer:	Rabbit IgG in phosphate buffered saline, pH 7.4, 150mM NaCl, 0.02% sodium azide and 50% glycerol. Store at -20 °C. Stable for 12 months from date of receipt.



Western blot analysis of Phospho-KSR2(Thr497) in lysates of HEK293, using Phospho-KSR2(Thr497) Ab(AF4342).

**IMPORTANT:** For western blot, incubate membrane with diluted primary Ab in 5% w/v milk, 1X TBS, 0.1% Tween@20 at 4°C with gentle shaking, overnight.

---

procedures. Not for resale without express authorization.