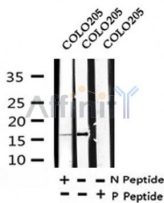


## Acetyl-Histone H3 (Lys122) Ab

Cat.#: AF4362	Concn.: 1mg/ml	Mol.Wt.: 17kDa
Size: 50ul,100ul,200ul	Source: Rabbit	Clonality: Polyclonal

Application:	WB 1:500-1:2000
Reactivity:	Human,Mouse,Rat
Purification:	Immunogen affinity purified.
Specificity:	Acetyl- Histone H3 (K122) Ab detects endogenous levels of Acetyl- Histone H3 (K122).
Immunogen:	A synthesized peptide derived from human Acetyl- Histone H3 (K122).
Uniprot:	P68431/Q71DI3/P84243
Subcellular Location:	Nucleus. Chromosome.
Tissue Specificity:	Expressed during S phase, then expression strongly decreases as cell division slows down during the process of differentiation.
Similarity:	Belongs to the histone H3 family.
Storage Condition and Buffer:	Rabbit IgG in phosphate buffered saline , pH 7.4, 150mM NaCl, 0.02% sodium azide and 50% glycerol.Store at -20 °C.Stable for 12 months from date of receipt.



Western blot analysis of Acetyl- Histone H3 (K122) in lysates of COLO205, using Acetyl- Histone H3 (K122) Ab(AF4362).

**IMPORTANT:** For western blot, incubate membrane with diluted primary Ab in 5% w/v milk , 1X TBS, 0.1% Tween@20 at 4°C with gentle shaking, overnight.

For Research Use Only. Not for use in diagnostic and therapeutic procedures. Not for resale without express authorization.