

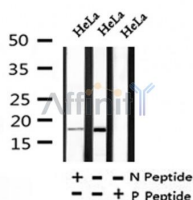
## Phospho-ENSA (Ser67) /ARPP19 (Ser62) Ab

Cat.#: AF4381  
Size: 50ul,100ul,200ul

Concn.: 1mg/ml  
Source: Rabbit

Mol.Wt.: 15kDa  
Clonality: Polyclonal

Application:	WB 1:500-1:2000
Reactivity:	Human,Mouse,Rat
Purification:	The Ab is from purified rabbit serum by affinity purification via sequential chromatography on phospho- and non-phospho-peptide affinity columns.
Specificity:	Phospho-ENSA (Ser67) /ARPP19 (Ser62) Ab detects endogenous levels of ENSA only when phosphorylated at Ser67.
Immunogen:	A synthesized peptide derived from human ENSA around the phosphorylation site of Ser67.
Uniprot:	O43768
Subcellular Location:	Cytoplasmic
Tissue Specificity:	Widely expressed with high levels in skeletal muscle and brain and lower levels in the pancreas.
Similarity:	Belongs to the endosulfine family.
Storage Condition and Buffer:	Rabbit IgG in phosphate buffered saline , pH 7.4, 150mM NaCl, 0.02% sodium azide and 50% glycerol.Store at -20 °C.Stable for 12 months from date of receipt.



Western blot analysis of Phospho-ENSA (Ser67) /ARPP19 (Ser62) in lysates of HeLa , using Phospho-ENSA (Ser67) /ARPP19 (Ser62) Ab(AF4381).

**IMPORTANT:** For western blot, incubate membrane with diluted primary Ab in 5% w/v milk , 1X TBS, 0.1% Tween@20 at 4°C with gentle shaking, overnight.

For Research Use Only. Not for use in diagnostic and therapeutic procedures. Not for resale without express authorization.