

Phospho-Rad17 (Ser635) Ab

Cat.#: AF4388	Concn.: 1mg/ml	Mol.Wt.: 77kDa
Size: 50ul,100ul,200ul	Source: Rabbit	Clonality: Polyclonal

Application: WB 1:500-1:2000

Reactivity: Human

Purification: The Ab is from purified rabbit serum by affinity purification via sequential chromatography on phospho- and non-phospho-peptide affinity columns.

Specificity: Phospho-Rad17 (Ser635) Ab detects endogenous levels of Rad17 only when phosphorylated at Ser635.

Immunogen: A synthesized peptide derived from human Rad17 around the phosphorylation site of Ser635.

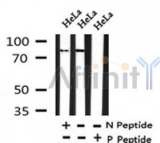
Uniprot: O75943

Subcellular Location: Nucleus. Phosphorylated form redistributes to discrete nuclear foci upon DNA damage.

Tissue Specificity: Overexpressed in various cancer cell lines and in colon carcinoma (at protein level). Isoform 2 and isoform 3 are the most abundant isoforms in non irradiated cells (at protein level). Ubiquitous at low levels. Highly expressed in testis, where it is expressed within the germinal epithelium of the seminiferous tubuli. Weakly expressed in seminomas (testicular tumors).

Similarity: Belongs to the rad17/RAD24 family.

Storage Condition and Buffer: Rabbit IgG in phosphate buffered saline , pH 7.4, 150mM NaCl, 0.02% sodium azide and 50% glycerol. Store at -20 °C. Stable for 12 months from date of receipt.



Western blot analysis of Phospho-Rad17 (Ser635) in lysates of HeLa , using Phospho-Rad17 (Ser635) Ab(AF4388).

IMPORTANT: For western blot, incubate membrane with diluted primary Ab in 5% w/v milk , 1X TBS, 0.1% Tween@20 at 4°C with gentle shaking,



Affinity Biosciences
website: www.affbiotech.com
order: order@affbiotech.com

overnight.

For Research Use Only. Not for use in diagnostic and therapeutic procedures. Not for resale without express authorization.