

## Phospho-PDGF Receptor beta (Tyr751) Ab

Cat.#: AF4398	Concn.: 1mg/ml	Mol.Wt.: 190kDa
Size: 50ul,100ul,200ul	Source: Rabbit	Clonality: Polyclonal

**Application:** WB 1:500-1:2000

**Reactivity:** Human,Mouse,Rat

**Purification:** The Ab is from purified rabbit serum by affinity purification via sequential chromatography on phospho- and non-phospho-peptide affinity columns.

**Specificity:** Phospho-PDGF Receptor beta (Tyr751) Ab detects endogenous levels of PDGF Receptor beta only when phosphorylated at Tyr751.

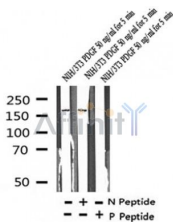
**Immunogen:** A synthesized peptide derived from human PDGF Receptor beta around the phosphorylation site of Tyr751.

**Uniprot:** P09619

**Subcellular Location:** Membrane.

**Similarity:** Belongs to the protein kinase superfamily. Tyr protein kinase family. CSF-1/PDGF receptor subfamily.

**Storage Condition and Buffer:** Rabbit IgG in phosphate buffered saline , pH 7.4, 150mM NaCl, 0.02% sodium azide and 50% glycerol.Store at -20 °C.Stable for 12 months from date of receipt.



Western blot analysis of Phospho-PDGF Receptor beta (Tyr751) in lysates of NIH/3T3 PDGF 50 ng/ml for 5 min, using Phospho-PDGF Receptor beta (Tyr751) Ab(AF4398).

**IMPORTANT:** For western blot, incubate membrane with diluted primary Ab in 5% w/v milk , 1X TBS, 0.1% Tween@20 at 4°C with gentle shaking, overnight.

For Research Use Only. Not for use in diagnostic and therapeutic procedures. Not for resale without express authorization.