

## Phospho-SRF (Ser103) Ab

Cat.#: AF4403  
Size: 50ul,100ul,200ul

Concn.: 1mg/ml  
Source: Rabbit

Mol.Wt.: 67kDa  
Clonality: Polyclonal

Application: WB 1:500-1:2000

Reactivity: Human, Mouse, Rat

Purification: The Ab is from purified rabbit serum by affinity purification via sequential chromatography on phospho- and non-phospho-peptide affinity columns.

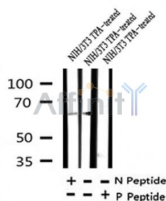
Specificity: Phospho-SRF (Ser103) Ab detects endogenous levels of SRF only when phosphorylated at Ser103.

Immunogen: A synthesized peptide derived from human SRF around the phosphorylation site of Ser103.

Uniprot: P11831

Subcellular Location: Nucleus.

Storage Condition and Buffer: Rabbit IgG in phosphate buffered saline, pH 7.4, 150mM NaCl, 0.02% sodium azide and 50% glycerol. Store at -20 °C. Stable for 12 months from date of receipt.



Western blot analysis of Phospho-SRF (Ser103) in lysates of NIH/3T3 TPA-treated, using Phospho-SRF (Ser103) Ab(AF4403).

**IMPORTANT:** For western blot, incubate membrane with diluted primary Ab in 5% w/v milk, 1X TBS, 0.1% Tween@20 at 4°C with gentle shaking, overnight.

For Research Use Only. Not for use in diagnostic and therapeutic procedures. Not for resale without express authorization.