

## Phospho-Ku70 (Ser520) Ab

Cat.#: AF4405	Concn.: 1mg/ml	Mol.Wt.: 70kDa
Size: 50ul,100ul,200ul	Source: Rabbit	Clonality: Polyclonal

**Application:** WB 1:500-1:2000

**Reactivity:** Human,Mouse,Rat

**Purification:** The Ab is from purified rabbit serum by affinity purification via sequential chromatography on phospho- and non-phospho-peptide affinity columns.

**Specificity:** Phospho-Ku70 (Ser520) Ab detects endogenous levels of Ku70 only when phosphorylated at Ser520.

**Immunogen:** A synthesized peptide derived from human Ku70 around the phosphorylation site of Ser520.

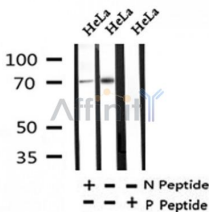
**Uniprot:** P12956

**Subcellular Location:** Nucleus. Chromosome.

**Tissue Specificity:** Expression does not increase during promyelocyte differentiation.

**Similarity:** Belongs to the ku70 family.

**Storage Condition and Buffer:** Rabbit IgG in phosphate buffered saline , pH 7.4, 150mM NaCl, 0.02% sodium azide and 50% glycerol.Store at -20 °C.Stable for 12 months from date of receipt.



Western blot analysis of Phospho-Ku70 (Ser520) in lysates of HeLa, using Phospho-Ku70 (Ser520) Ab(AF4405).

**IMPORTANT:** For western blot, incubate membrane with diluted primary Ab in 5% w/v milk , 1X TBS, 0.1% Tween@20 at 4°C with gentle shaking, overnight.

For Research Use Only. Not for use in diagnostic and therapeutic procedures. Not for resale without express authorization.