

Phospho-Ku80 (Ser145) Ab

Cat.#: AF4406	Concn.: 1mg/ml	Mol.Wt.: 83kDa
Size: 50ul,100ul,200ul	Source: Rabbit	Clonality: Polyclonal

Application: WB 1:500-1:2000

Reactivity: Human

Purification: The Ab is from purified rabbit serum by affinity purification via sequential chromatography on phospho- and non-phospho-peptide affinity columns.

Specificity: Phospho-Ku80 (Ser145) Ab detects endogenous levels of Ku80 only when phosphorylated at Ser145.

Immunogen: A synthesized peptide derived from human Ku80 around the phosphorylation site of Ser145.

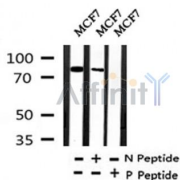
Uniprot: P13010

Subcellular Location: Nucleus. Chromosome.

Tissue Specificity: Expression increases during promyelocyte differentiation.

Similarity: The EEXXXDDL motif is required for the interaction with catalytic subunit PRKDC and its recruitment to sites of DNA damage.Belongs to the ku80 family.

Storage Condition and Buffer: Rabbit IgG in phosphate buffered saline , pH 7.4, 150mM NaCl, 0.02% sodium azide and 50% glycerol.Store at -20 °C.Stable for 12 months from date of receipt.



Western blot analysis of Phospho-Ku80 (Ser145) in lysates of MCF7 , using Phospho-Ku80 (Ser145) Ab(AF4406).

IMPORTANT: For western blot, incubate membrane with diluted primary Ab in 5% w/v milk , 1X TBS, 0.1% Tween@20 at 4°C with gentle shaking, overnight.

For Research Use Only. Not for use in diagnostic and therapeutic procedures. Not for resale without express authorization.