

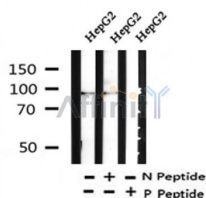
## Phospho-IREB1 (Ser138) Ab

Cat.#: AF4411  
Size: 50ul, 100ul, 200ul

Concn.: 1mg/ml  
Source: Rabbit

Mol.Wt.: 98kDa  
Clonality: Polyclonal

Application:	WB 1:500-1:2000
Reactivity:	Human, Mouse, Rat
Purification:	The Ab is from purified rabbit serum by affinity purification via sequential chromatography on phospho- and non-phospho-peptide affinity columns.
Specificity:	Phospho-IREB1 (Ser138) Ab detects endogenous levels of IREB1 only when phosphorylated at Ser138.
Immunogen:	A synthesized peptide derived from human IREB1 around the phosphorylation site of Ser138.
Uniprot:	P21399
Subcellular Location:	Cytoplasm.
Similarity:	Belongs to the aconitase/IPM isomerase family.
Storage Condition and Buffer:	Rabbit IgG in phosphate buffered saline , pH 7.4, 150mM NaCl, 0.02% sodium azide and 50% glycerol. Store at -20 °C. Stable for 12 months from date of receipt.



Western blot analysis of Phospho-IREB1 (Ser138) in lysates of HepG2, using Phospho-IREB1 (Ser138) Ab(AF4411).

**IMPORTANT:** For western blot, incubate membrane with diluted primary Ab in 5% w/v milk , 1X TBS, 0.1% Tween@20 at 4°C with gentle shaking, overnight.

For Research Use Only. Not for use in diagnostic and therapeutic procedures. Not for resale without express authorization.