

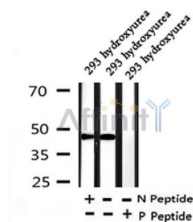
## Phospho-Cyclin E1 (Thr73) Ab

Cat.#: AF4413  
Size: 50ul, 100ul, 200ul

Concn.: 1mg/ml  
Source: Rabbit

Mol.Wt.: 48kDa  
Clonality: Polyclonal

Application:	WB 1:500-1:2000
Reactivity:	Human
Purification:	The Ab is from purified rabbit serum by affinity purification via sequential chromatography on phospho- and non-phospho-peptide affinity columns.
Specificity:	Phospho-Cyclin E1 (Thr73) Ab detects endogenous levels of Cyclin E1 only when phosphorylated at Thr73.
Immunogen:	A synthesized peptide derived from human Cyclin E1 around the phosphorylation site of Thr73.
Uniprot:	P24864
Subcellular Location:	Nucleus.
Tissue Specificity:	Highly expressed in testis and placenta. Low levels in bronchial epithelial cells.
Similarity:	Belongs to the cyclin family. Cyclin E subfamily.
Storage Condition and Buffer:	Rabbit IgG in phosphate buffered saline , pH 7.4, 150mM NaCl, 0.02% sodium azide and 50% glycerol. Store at -20 °C. Stable for 12 months from date of receipt.



Western blot analysis of Phospho-Cyclin E1 (Thr73) in lysates of 293 hydroxyurea , using Phospho-Cyclin E1 (Thr73) Ab(AF4413).

**IMPORTANT:** For western blot, incubate membrane with diluted primary Ab in 5% w/v milk , 1X TBS, 0.1% Tween@20 at 4°C with gentle shaking, overnight.

For Research Use Only. Not for use in diagnostic and therapeutic procedures. Not for resale without express authorization.