

Phospho-CAD (Ser1859) Ab

Cat.#: AF4415
Size: 50ul,100ul,200ul

Concn.: 1mg/ml
Source: Rabbit

Mol.Wt.: 240kDa
Clonality: Polyclonal

Application: WB 1:500-1:2000

Reactivity: Human,Mouse,Rat

Purification: The Ab is from purified rabbit serum by affinity purification via sequential chromatography on phospho- and non-phospho-peptide affinity columns.

Specificity: Phospho-CAD (Ser1859) Ab detects endogenous levels of CAD only when phosphorylated at Ser1859.

Immunogen: A synthesized peptide derived from human CAD around the phosphorylation site of Ser1859.

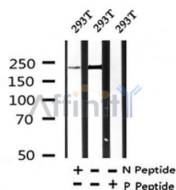
Uniprot: P27708

Subcellular Location: Cytoplasmic and Nuclear

Tissue Specificity: Transcriptionally repressed following hypoxia by HIF1A.

Similarity: In the central section; belongs to the metallo-dependent hydrolases superfamily. DHOase family. CAD subfamily.

Storage Condition and Buffer: Rabbit IgG in phosphate buffered saline , pH 7.4, 150mM NaCl, 0.02% sodium azide and 50% glycerol.Store at -20 °C.Stable for 12 months from date of receipt.



Western blot analysis of Phospho-CAD (Ser1859) in lysates of 293T , using Phospho-CAD (Ser1859) Ab(AF4415).

IMPORTANT: For western blot, incubate membrane with diluted primary Ab in 5% w/v milk , 1X TBS, 0.1% Tween@20 at 4°C with gentle shaking, overnight.

For Research Use Only. Not for use in diagnostic and therapeutic procedures. Not for resale without express authorization.