

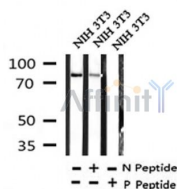
Phospho-FoxM1 (Ser35) Ab

Cat.#: AF4458
Size: 50ul,100ul,200ul

Concn.: 1mg/ml
Source: Rabbit

Mol.Wt.: 83kDa
Clonality: Polyclonal

Application:	WB 1:500-1:2000
Reactivity:	Human, Mouse
Purification:	The Ab is from purified rabbit serum by affinity purification via sequential chromatography on phospho- and non-phospho-peptide affinity columns.
Specificity:	Phospho-FoxM1 (Ser35) Ab detects endogenous levels of FoxM1 only when phosphorylated at Ser35.
Immunogen:	A synthesized peptide derived from human FoxM1 around the phosphorylation site of Ser35.
Uniprot:	Q08050
Subcellular Location:	Nucleus.
Tissue Specificity:	Expressed in thymus, testis, small intestine, colon followed by ovary. Appears to be expressed only in adult organs containing proliferating/cycling cells or in response to growth factors. Also expressed in epithelial cell lines derived from tumors. Not expressed in resting cells. Isoform 2 is highly expressed in testis.
Similarity:	Within the protein there is a domain which acts as a transcriptional activator. Insertion of a splicing sequence within it inactivates this transcriptional activity, as it is the case for isoform 4.
Storage Condition and Buffer:	Rabbit IgG in phosphate buffered saline , pH 7.4, 150mM NaCl, 0.02% sodium azide and 50% glycerol. Store at -20 °C. Stable for 12 months from date of receipt.



Western blot analysis of Phospho-FoxM1 (Ser35) in lysates of NIH 3T3, using Phospho-FoxM1 (Ser35) Ab(AF4458).

in 5% w/v milk , 1X TBS, 0.1% Tween@20 at 4°C with gentle shaking,
overnight.

For Research Use Only. Not for use in diagnostic and therapeutic
procedures. Not for resale without express authorization.