

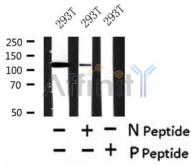
## Phospho-GEF-H1 (Ser886) Ab

Cat.#: AF4483  
Size: 50ul,100ul,200ul

Concn.: 1mg/ml  
Source: Rabbit

Mol.Wt.: 120kDa  
Clonality: Polyclonal

Application:	WB 1:500-1:2000
Reactivity:	Human,Mouse,Rat
Purification:	The Ab is from purified rabbit serum by affinity purification via sequential chromatography on phospho- and non-phospho-peptide affinity columns.
Specificity:	Phospho-GEF-H1 (Ser886) Ab detects endogenous levels of GEF-H1 only when phosphorylated at Ser886.
Immunogen:	A synthesized peptide derived from human GEF-H1 around the phosphorylation site of Ser886.
Uniprot:	Q92974
Subcellular Location:	Cytoplasm. Cell junction > tight junction. Golgi apparatus. Cytoplasm > cytoskeleton > spindle. Cell projection > ruffle membrane. Localizes to the tips of cortical microtubules of the mitotic spindle during cell division, and is further released upon microtubule depolymerization. Recruited into membrane ruffles induced by <i>S.flexneri</i> at tight junctions of polarized epithelial cells.
Tissue Specificity:	Up-regulated by bacterial peptidoglycans stimulation, such as muramyl dipeptide and in biopsies from inflamed mucosal areas of Crohn's disease patients.
Similarity:	The DH (DBL-homology) domain interacts with and promotes loading of GTP on RhoA. Promotes tyrosine phosphorylation of RIPK2.The PH domain has no affinity for phosphoinositides suggesting that it does not interact directly with membranes.The phorbol-ester/DAG-type zinc-finger and the C-terminal coiled-coil domains (606-986) are both important for association with microtubules.
Storage Condition and Buffer:	Rabbit IgG in phosphate buffered saline , pH 7.4, 150mM NaCl, 0.02% sodium azide and 50% glycerol.Store at -20 °C.Stable for 12 months from date of receipt.



Western blot analysis of Phospho-GEF-H1 (Ser886) in lysates of 293T, using Phospho-GEF-H1 (Ser886) Ab(AF4483).

**IMPORTANT:** For western blot, incubate membrane with diluted primary Ab in 5% w/v milk , 1X TBS, 0.1% Tween@20 at 4°C with gentle shaking, overnight.

For Research Use Only. Not for use in diagnostic and therapeutic procedures. Not for resale without express authorization.