

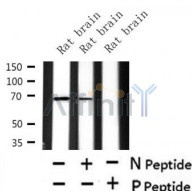
Phospho-CaMKK2 (Ser511) Ab

Cat.#: AF4487
Size: 50ul,100ul,200ul

Concn.: 1mg/ml
Source: Rabbit

Mol.Wt.: 68kDa
Clonality: Polyclonal

Application:	WB 1:500-1:2000
Reactivity:	Human,Mouse,Rat
Purification:	The Ab is from purified rabbit serum by affinity purification via sequential chromatography on phospho- and non-phospho-peptide affinity columns.
Specificity:	Phospho-CaMKK2 (Ser511) Ab detects endogenous levels of CaMKK2 only when phosphorylated at Ser511.
Immunogen:	A synthesized peptide derived from human CaMKK2 around the phosphorylation site of Ser511.
Uniprot:	Q96RR4
Subcellular Location:	Cytoplasm.
Tissue Specificity:	Ubiquitously expressed with higher levels in the brain. Intermediate levels are detected in spleen, prostate, thyroid and leukocytes. The lowest level is in lung.
Similarity:	The autoinhibitory domain overlaps with the calmodulin binding region and may be involved in intrasteric autoinhibition.The RP domain (arginine/proline-rich) is involved in the recognition of CAMKI and CAMK4 as substrates.Belongs to the protein kinase superfamily. Ser/Thr protein kinase family.
Storage Condition and Buffer:	Rabbit IgG in phosphate buffered saline , pH 7.4, 150mM NaCl, 0.02% sodium azide and 50% glycerol.Store at -20 °C.Stable for 12 months from date of receipt.



Western blot analysis of Phospho-CaMKK2 (Ser511) in lysates of Rat brain, using Phospho-CaMKK2 (Ser511) Ab(AF4487).

IMPORTANT: For western blot, incubate membrane with diluted primary Ab in 5% w/v milk , 1X TBS, 0.1% Tween@20 at 4°C with gentle shaking,

overnight.

For Research Use Only. Not for use in diagnostic and therapeutic procedures. Not for resale without express authorization.