

Phospho-Mnk1 (Thr250/255) Ab

Cat.#: AF4488

Size: 50ul,100ul,200ul

Concn.: 1mg/ml

Source: Rabbit

Mol.Wt.: 50kDa

Clonality: Polyclonal

Application: WB 1:500-1:2000

Reactivity: Human,Mouse

Purification: The Ab is from purified rabbit serum by affinity purification via sequential chromatography on phospho- and non-phospho-peptide affinity columns.

Specificity: Phospho-Mnk1 (Thr250/255) Ab detects endogenous levels of Mnk1 only when phosphorylated at Thr250/255.

Immunogen: A synthesized peptide derived from human Mnk1 around the phosphorylation site of Thr250/255.

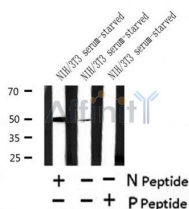
Uniprot: Q9BUB5

Subcellular Location: Cytoplasm and Cytoplasm. Nucleus.

Tissue Specificity: Ubiquitous.

Similarity: Belongs to the protein kinase superfamily. CAMK Ser/Thr protein kinase family.

Storage Condition and Buffer: Rabbit IgG in phosphate buffered saline , pH 7.4, 150mM NaCl, 0.02% sodium azide and 50% glycerol.Store at -20 °C.Stable for 12 months from date of receipt.



Western blot analysis of Phospho-Mnk1 (Thr250/255) in lysates of NIH/3T3 serum-starved , using Phospho-Mnk1 (Thr250/255) Ab(AF4488).

IMPORTANT: For western blot, incubate membrane with diluted primary Ab in 5% w/v milk , 1X TBS, 0.1% Tween@20 at 4°C with gentle shaking, overnight.

For Research Use Only. Not for use in diagnostic and therapeutic procedures. Not for resale without express authorization.