

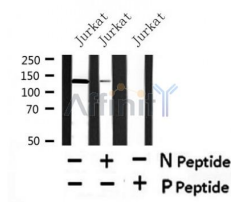
Phospho-BACH1/BRIP1 (Thr1133) Ab

Cat.#: AF4489
Size: 50ul, 100ul, 200ul

Concn.: 1mg/ml
Source: Rabbit

Mol.Wt.: 145kDa
Clonality: Polyclonal

Application:	WB 1:500-1:2000
Reactivity:	Human
Purification:	The Ab is from purified rabbit serum by affinity purification via sequential chromatography on phospho- and non-phospho-peptide affinity columns.
Specificity:	Phospho-BACH1/BRIP1 (Thr1133) Ab detects endogenous levels of BACH1/BRIP1 only when phosphorylated at Thr1133.
Immunogen:	A synthesized peptide derived from human BACH1/BRIP1 around the phosphorylation site of Thr1133.
Uniprot:	Q9BX63
Subcellular Location:	Nucleus.
Tissue Specificity:	Ubiquitously expressed, with highest levels in testis.
Similarity:	4Fe-4S iron-sulfur-binding is required for helicase activity. Belongs to the DEAD box helicase family. DEAH subfamily.
Storage Condition and Buffer:	Rabbit IgG in phosphate buffered saline, pH 7.4, 150mM NaCl, 0.02% sodium azide and 50% glycerol. Store at -20 °C. Stable for 12 months from date of receipt.



Western blot analysis of Phospho-BACH1/BRIP1 (Thr1133) in lysates of Jurkat, using Phospho-BACH1/BRIP1 (Thr1133) Ab(AF4489).

IMPORTANT: For western blot, incubate membrane with diluted primary Ab in 5% w/v milk, 1X TBS, 0.1% Tween@20 at 4°C with gentle shaking, overnight.