

Phospho-RanBP3 (Ser126) Ab

Cat.#: AF4495

Size: 50ul, 100ul, 200ul

Concn.: 1mg/ml

Source: Rabbit

Mol.Wt.: 70kDa

Clonality: Polyclonal

Application: WB 1:500-1:2000

Reactivity: Human

Purification: The Ab is from purified rabbit serum by affinity purification via sequential chromatography on phospho- and non-phospho-peptide affinity columns.

Specificity: Phospho-RanBP3 (Ser126) Ab detects endogenous levels of RanBP3 only when phosphorylated at Ser126.

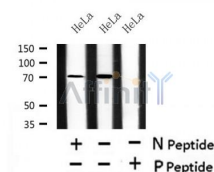
Immunogen: A synthesized peptide derived from human RanBP3 around the phosphorylation site of Ser126.

Uniprot: Q9H6Z4

Subcellular Location: Cytoplasm. Nucleus.

Tissue Specificity: Widely expressed with high levels in testis and heart.

Storage Condition and Buffer: Rabbit IgG in phosphate buffered saline, pH 7.4, 150mM NaCl, 0.02% sodium azide and 50% glycerol. Store at -20 °C. Stable for 12 months from date of receipt.



Western blot analysis of Phospho-RanBP3 (Ser126) in lysates of HeLa, using Phospho-RanBP3 (Ser126) Ab(AF4495).

IMPORTANT: For western blot, incubate membrane with diluted primary Ab in 5% w/v milk, 1X TBS, 0.1% Tween@20 at 4°C with gentle shaking, overnight.

For Research Use Only. Not for use in diagnostic and therapeutic procedures. Not for resale without express authorization.