

## Phospho-DAPP1/BAM32 (Tyr139) Ab

Cat.#: AF4502

Size: 50ul, 100ul, 200ul

Concn.: 1mg/ml

Source: Rabbit

Mol.Wt.: 29kDa

Clonality: Polyclonal

Application: WB 1:500-1:2000

Reactivity: Human

Purification: The Ab is from purified rabbit serum by affinity purification via sequential chromatography on phospho- and non-phospho-peptide affinity columns.

Specificity: Phospho-DAPP1/BAM32 (Tyr139) Ab detects endogenous levels of DAPP1/BAM32 only when phosphorylated at Tyr139.

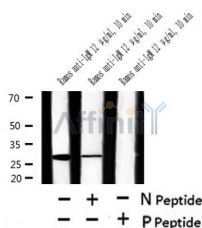
Immunogen: A synthesized peptide derived from human DAPP1/BAM32 around the phosphorylation site of Tyr139.

Uniprot: Q9UN19

Subcellular Location: Cytoplasm. Membrane. Membrane-associated after cell stimulation leading to its translocation.

Tissue Specificity: Highly expressed in placenta and lung, followed by brain, heart, kidney, liver, pancreas and skeletal muscle. Expressed by B-lymphocytes, but not T-lymphocytes or nonhematopoietic cells.

Storage Condition and Buffer: Rabbit IgG in phosphate buffered saline, pH 7.4, 150mM NaCl, 0.02% sodium azide and 50% glycerol. Store at -20 °C. Stable for 12 months from date of receipt.



Western blot analysis of Phospho-DAPP1/BAM32 (Tyr139) in lysates of Ramos anti-IgM 12 ug/ml, 10 min, using Phospho-DAPP1/BAM32 (Tyr139) Ab (AF4502).

**IMPORTANT:** For western blot, incubate membrane with diluted primary Ab in 5% w/v milk, 1X TBS, 0.1% Tween@20 at 4°C with gentle shaking, overnight.

For Research Use Only. Not for use in diagnostic and therapeutic procedures. Not for resale without express authorization.