

## Phospho-Rabphilin 3A (Ser424) Ab

Cat.#: AF4505

Size: 50ul, 100ul, 200ul

Concn.: 1mg/ml

Source: Rabbit

Mol.Wt.: 77kDa

Clonality: Polyclonal

Application: WB 1:500-1:2000

Reactivity: Human, Mouse, Rat

Purification: The Ab is from purified rabbit serum by affinity purification via sequential chromatography on phospho-peptide and non-phospho-peptide affinity columns.

Specificity: Rabphilin 3A (Phospho-Ser424) Ab detects endogenous levels of Rabphilin 3A only when phosphorylated at Ser424.

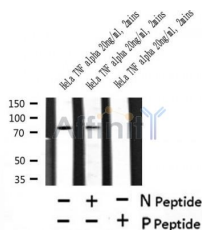
Immunogen: A synthesized peptide derived from human Rabphilin 3A around the phosphorylation site of Ser424.

Uniprot: Q9Y2J0

Subcellular Location: Cell junction > synapse.

Similarity: Binds calcium via the C2 domains. The calcium-bound C2 domains mediate interactions with phospholipid bilayers (By similarity).

Storage Condition and Buffer: Rabbit IgG in phosphate buffered saline, pH 7.4, 150mM NaCl, 0.02% sodium azide and 50% glycerol. Store at -20 °C. Stable for 12 months from date of receipt.



Western blot analysis of Rabphilin 3A (Phospho-Ser424) in lysates of HeLa TNF alpha 20ng/ml, 2mins, using Rabphilin 3A (Phospho-Ser424) Ab(AF4505).

**IMPORTANT:** For western blot, incubate membrane with diluted primary Ab in 5% w/v milk, 1X TBS, 0.1% Tween@20 at 4°C with gentle shaking, overnight.

For Research Use Only. Not for use in diagnostic and therapeutic procedures. Not for resale without express authorization.