

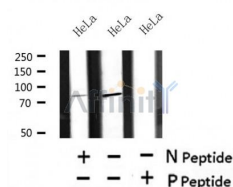
## Phospho-TACC3 (Ser558) Ab

Cat.#: AF4506  
Size: 50ul,100ul,200ul

Concn.: 1mg/ml  
Source: Rabbit

Mol.Wt.: 80kDa  
Clonality: Polyclonal

Application:	WB 1:500-1:2000
Reactivity:	Human,Mouse,Rat
Purification:	The Ab is from purified rabbit serum by affinity purification via sequential chromatography on phospho- and non-phospho-peptide affinity columns.
Specificity:	Phospho-TACC3 (Ser558) Ab detects endogenous levels of TACC3 only when phosphorylated at Ser558.
Immunogen:	A synthesized peptide derived from human TACC3 around the phosphorylation site of Ser558.
Uniprot:	Q9Y6A5
Subcellular Location:	Cytoplasm.
Tissue Specificity:	Up-regulated in various cancer cell lines.
Similarity:	Belongs to the TACC family.
Storage Condition and Buffer:	Rabbit IgG in phosphate buffered saline , pH 7.4, 150mM NaCl, 0.02% sodium azide and 50% glycerol.Store at -20 °C.Stable for 12 months from date of receipt.



Western blot analysis of Phospho-TACC3 (Ser558) in lysates of HeLa , using Phospho-TACC3 (Ser558) Ab(AF4506).

**IMPORTANT:** For western blot, incubate membrane with diluted primary Ab in 5% w/v milk , 1X TBS, 0.1% Tween@20 at 4°C with gentle shaking, overnight.

For Research Use Only. Not for use in diagnostic and therapeutic procedures. Not for resale without express authorization.