

## DKK1 Ab

Cat.#: AF4600  
Size: 50ul, 100ul, 200ul

Concn.: 1mg/ml  
Source: Rabbit

Mol.Wt.: 28-40kDa  
Clonality: Polyclonal

Application: WB 1:500-1:2000 IHC 1:50-1:200

Reactivity: Human, Mouse, Rat

Purification: The antiserum was purified by peptide affinity chromatography using SulfoLink™ Coupling Resin (Thermo Fisher Scientific).

Specificity: DKK1 Ab detects endogenous levels of DKK1.

Immunogen: A synthesized peptide derived from human DKK1.

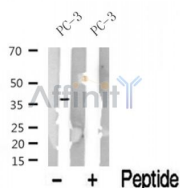
Uniprot: O94907

Subcellular Location: Secreted.

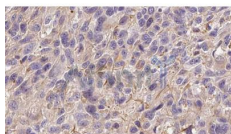
Tissue Specificity: Placenta.

Similarity: The C-terminal cysteine-rich domain mediates interaction with LRP5 and LRP6. Belongs to the dickkopf family.

Storage Condition and Buffer: Rabbit IgG in phosphate buffered saline, pH 7.4, 150mM NaCl, 0.02% sodium azide and 50% glycerol. Store at -20 °C. Stable for 12 months from date of receipt.



Western blot analysis of DKK1 in lysates of PC-3, using DKK1 Ab(AF4600).



AF4600 at 1/100 staining Human Melanoma tissue by IHC-P. The sample was formaldehyde fixed and a heat mediated antigen retrieval step in citrate buffer was performed. The sample was then blocked and incubated with the Ab for 1.5 hours at 22°C. An HRP conjugated goat anti-rabbit Ab was used as the secondary.

**IMPORTANT:** For western blot, incubate membrane with diluted primary Ab

---

in 5% w/v milk , 1X TBS, 0.1% Tween@20 at 4°C with gentle shaking,  
overnight.

---

For Research Use Only. Not for use in diagnostic and therapeutic  
procedures. Not for resale without express authorization.