

## Claudin 5 Ab

Cat.#: AF4607  
Size: 50ul,100ul,200ul

Concn.: 1mg/ml  
Source: Rabbit

Mol.Wt.: 23kDa  
Clonality: Polyclonal

Application: WB 1:500-1:2000

Reactivity: Human,Mouse,Rat

Purification: The antiserum was purified by peptide affinity chromatography using SulfoLink™ Coupling Resin (Thermo Fisher Scientific).

Specificity: Claudin 5 Ab detects endogenous levels of Claudin 5.

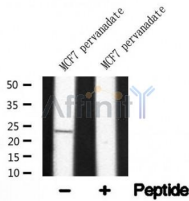
Immunogen: A synthesized peptide derived from human Claudin 5.

Uniprot: O00501

Subcellular Location: Cell junction > tight junction. Cell membrane.

Similarity: Belongs to the claudin family.

Storage Condition and Buffer: Rabbit IgG in phosphate buffered saline , pH 7.4, 150mM NaCl, 0.02% sodium azide and 50% glycerol.Store at -20 °C.Stable for 12 months from date of receipt.



Western blot analysis of Claudin 5 in lysates of MCF7 pervanadate, using Claudin 5 Ab(AF4607).

**IMPORTANT:** For western blot, incubate membrane with diluted primary Ab in 5% w/v milk , 1X TBS, 0.1% Tween@20 at 4°C with gentle shaking, overnight.

For Research Use Only. Not for use in diagnostic and therapeutic procedures. Not for resale without express authorization.