

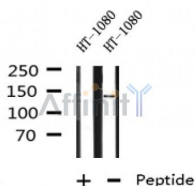
TSC1 Ab

Cat.#: AF4609
Size: 50ul,100ul,200ul

Concn.: 1mg/ml
Source: Rabbit

Mol.Wt.: 150-170kDa
Clonality: Polyclonal

| | |
|-------------------------------|--------------------------------------------------------------------------------------------------------------------------------------------------------------|
| Application: | WB 1:500-1:2000 |
| Reactivity: | Human,Mouse,Rat |
| Purification: | The antiserum was purified by peptide affinity chromatography using SulfoLink™ Coupling Resin (Thermo Fisher Scientific). |
| Specificity: | TSC1 Ab detects endogenous levels of TSC1. |
| Immunogen: | A synthesized peptide derived from human TSC1. |
| Uniprot: | Q92574 |
| Subcellular Location: | Cytoplasm. Membrane. At steady state found in association with membranes. |
| Tissue Specificity: | Highly expressed in skeletal muscle, followed by heart, brain, placenta, pancreas, lung, liver and kidney. Also expressed in embryonic kidney cells. |
| Similarity: | The C-terminal putative coiled-coil domain is necessary for interaction with TSC2. |
| Storage Condition and Buffer: | Rabbit IgG in phosphate buffered saline , pH 7.4, 150mM NaCl, 0.02% sodium azide and 50% glycerol.Store at -20 °C.Stable for 12 months from date of receipt. |



Western blot analysis of TSC1 in lysates of HT-1080, using TSC1 Ab(AF4609).

IMPORTANT: For western blot, incubate membrane with diluted primary Ab in 5% w/v milk , 1X TBS, 0.1% Tween@20 at 4°C with gentle shaking, overnight.

For Research Use Only. Not for use in diagnostic and therapeutic procedures. Not for resale without express authorization.