

GRAP2 Ab

Cat.#: AF4622
Size: 50ul,100ul,200ul

Concn.: 1mg/ml
Source: Rabbit

Mol.Wt.: 25kDa,38 kDa
Clonality: Polyclonal

Application: WB 1:500-1:2000

Reactivity: Human,Mouse,Rat

Purification: The antiserum was purified by peptide affinity chromatography using SulfoLink™ Coupling Resin (Thermo Fisher Scientific).

Specificity: GRAP2 Ab detects endogenous levels of GRAP2.

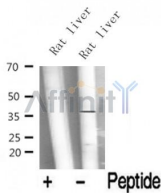
Immunogen: A synthesized peptide derived from human GRAP2.

Uniprot: O75791

Subcellular Location: Endosome;Nucleus;

Similarity: Belongs to the GRB2/sem-5/DRK family.

Storage Condition and Buffer: Rabbit IgG in phosphate buffered saline , pH 7.4, 150mM NaCl, 0.02% sodium azide and 50% glycerol.Store at -20 °C.Stable for 12 months from date of receipt.



Western blot analysis of GRAP2 in lysates of Rat liver , using GRAP2 Ab(AF4622).

IMPORTANT: For western blot, incubate membrane with diluted primary Ab in 5% w/v milk , 1X TBS, 0.1% Tween@20 at 4°C with gentle shaking, overnight.

For Research Use Only. Not for use in diagnostic and therapeutic procedures. Not for resale without express authorization.