

ITCH Ab

Cat.#: AF4627
Size: 50ul,100ul,200ul

Concn.: 1mg/ml
Source: Rabbit

Mol.Wt.: 105kDa
Clonality: Polyclonal

Application: WB 1:500-1:2000

Reactivity: Human, Mouse

Purification: The antiserum was purified by peptide affinity chromatography using SulfoLink™ Coupling Resin (Thermo Fisher Scientific).

Specificity: ITCH Ab detects endogenous levels of ITCH.

Immunogen: A synthesized peptide derived from human ITCH.

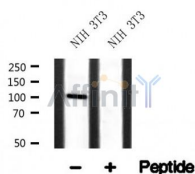
Uniprot: Q96J02

Subcellular Location: Cell membrane. Cytoplasm. Nucleus. Associates with endocytic vesicles. May be recruited to exosomes by NDFIP1.

Tissue Specificity: Widely expressed.

Similarity: The WW domains mediate interaction with PPxY motif-containing proteins.

Storage Condition and Buffer: Rabbit IgG in phosphate buffered saline , pH 7.4, 150mM NaCl, 0.02% sodium azide and 50% glycerol. Store at -20 °C. Stable for 12 months from date of receipt.



IMPORTANT: For western blot, incubate membrane with diluted primary Ab in 5% w/v milk , 1X TBS, 0.1% Tween@20 at 4°C with gentle shaking, overnight.

For Research Use Only. Not for use in diagnostic and therapeutic procedures. Not for resale without express authorization.