

## NCF2 Ab

Cat.#: AF4643  
Size: 50ul,100ul,200ul

Concn.: 1mg/ml  
Source: Rabbit

Mol.Wt.: 60kDa  
Clonality: Polyclonal

Application: WB 1:500-1:2000

Reactivity: Human,Mouse,Rat

Purification: The antiserum was purified by peptide affinity chromatography using SulfoLink™ Coupling Resin (Thermo Fisher Scientific).

Specificity: NCF2 Ab detects endogenous levels of NCF2.

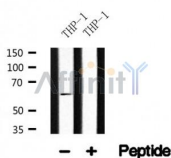
Immunogen: A synthesized peptide derived from human NCF2.

Uniprot: P19878

Subcellular Location: Cytoplasm.

Similarity: The OPR/PB1 domain mediates the association with NCF4/p40-PHOX.Belongs to the NCF2/NOXA1 family.

Storage Condition and Buffer: Rabbit IgG in phosphate buffered saline , pH 7.4, 150mM NaCl, 0.02% sodium azide and 50% glycerol.Store at -20 °C.Stable for 12 months from date of receipt.



Western blot analysis of NCF2 in lysates of THP-1, using NCF2 Ab(AF4643).

**IMPORTANT:** For western blot, incubate membrane with diluted primary Ab in 5% w/v milk , 1X TBS, 0.1% Tween@20 at 4°C with gentle shaking, overnight.

For Research Use Only. Not for use in diagnostic and therapeutic procedures. Not for resale without express authorization.