

Histone H3 Ab

Cat.#: AF4662
Size: 50ul,100ul,200ul

Concn.: 1mg/ml
Source: Rabbit

Mol.Wt.: 17kDa
Clonality: Polyclonal

Application: WB 1:500-1:2000

Reactivity: Human,Mouse,Rat

Purification: The antiserum was purified by peptide affinity chromatography using SulfoLink™ Coupling Resin (Thermo Fisher Scientific).

Specificity: Histone H3 Ab detects endogenous levels of Histone H3.

Immunogen: A synthesized peptide derived from human Histone H3.

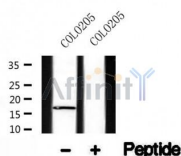
Uniprot: P68431/Q71DI3/P84243

Subcellular Location: Nucleus. Chromosome.

Tissue Specificity: Expressed during S phase, then expression strongly decreases as cell division slows down during the process of differentiation.

Similarity: Belongs to the histone H3 family.

Storage Condition and Buffer: Rabbit IgG in phosphate buffered saline , pH 7.4, 150mM NaCl, 0.02% sodium azide and 50% glycerol.Store at -20 °C.Stable for 12 months from date of receipt.



Western blot analysis of Histone H3 in lysates of COLO205, using Histone H3 Ab(AF4662).

IMPORTANT: For western blot, incubate membrane with diluted primary Ab in 5% w/v milk , 1X TBS, 0.1% Tween@20 at 4°C with gentle shaking, overnight.

For Research Use Only. Not for use in diagnostic and therapeutic procedures. Not for resale without express authorization.