

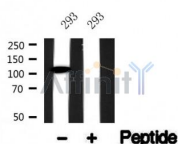
## M-CSF Receptor Ab

Cat.#: AF4696  
Size: 50ul, 100ul, 200ul

Concn.: 1mg/ml  
Source: Rabbit

Mol.Wt.: 108kDa  
Clonality: Polyclonal

Application:	WB 1:500-1:2000
Reactivity:	Human, Mouse, Rat
Purification:	The antiserum was purified by peptide affinity chromatography using SulfoLink™ Coupling Resin (Thermo Fisher Scientific).
Specificity:	M-CSF Receptor Ab detects endogenous levels of M-CSF Receptor.
Immunogen:	A synthesized peptide derived from human M-CSF Receptor.
Uniprot:	P07333
Subcellular Location:	Membrane.
Tissue Specificity:	Expressed in bone marrow and in differentiated blood mononuclear cells.
Similarity:	The juxtamembrane domain functions as autoinhibitory region. Phosphorylation of tyrosine residues in this region leads to a conformation change and activation of the kinase. The activation loop plays an important role in the regulation of kinase activity. Phosphorylation of tyrosine residues in this region leads to a conformation change and activation of the kinase. Belongs to the protein kinase superfamily. Tyr protein kinase family. CSF-1/PDGF receptor subfamily.
Storage Condition and Buffer:	Rabbit IgG in phosphate buffered saline, pH 7.4, 150mM NaCl, 0.02% sodium azide and 50% glycerol. Store at -20 °C. Stable for 12 months from date of receipt.



Western blot analysis of M-CSF Receptor in lysates of 293, using M-CSF Receptor Ab (AF4696).

---

in 5% w/v milk , 1X TBS, 0.1% Tween@20 at 4°C with gentle shaking,  
overnight.

---

For Research Use Only. Not for use in diagnostic and therapeutic  
procedures. Not for resale without express authorization.