

## Ku80 Ab

Cat.#: AF4706  
Size: 50ul,100ul,200ul

Concn.: 1mg/ml  
Source: Rabbit

Mol.Wt.: 83kDa  
Clonality: Polyclonal

Application: WB 1:500-1:2000

Reactivity: Human

Purification: The antiserum was purified by peptide affinity chromatography using SulfoLink™ Coupling Resin (Thermo Fisher Scientific).

Specificity: Ku80 Ab detects endogenous levels of Ku80.

Immunogen: A synthesized peptide derived from human Ku80.

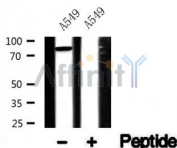
Uniprot: P13010

Subcellular Location: Nucleus. Chromosome.

Tissue Specificity: Expression increases during promyelocyte differentiation.

Similarity: The EEXXXDDL motif is required for the interaction with catalytic subunit PRKDC and its recruitment to sites of DNA damage.Belongs to the ku80 family.

Storage Condition and Buffer: Rabbit IgG in phosphate buffered saline , pH 7.4, 150mM NaCl, 0.02% sodium azide and 50% glycerol.Store at -20 °C.Stable for 12 months from date of receipt.



Western blot analysis of Ku80 in lysates of A549 , using Ku80 Ab(AF4706).

**IMPORTANT:** For western blot, incubate membrane with diluted primary Ab in 5% w/v milk , 1X TBS, 0.1% Tween@20 at 4°C with gentle shaking, overnight.

For Research Use Only. Not for use in diagnostic and therapeutic procedures. Not for resale without express authorization.