

## cdc25C Ab

Cat.#: AF4717  
Size: 50ul,100ul,200ul

Concn.: 1mg/ml  
Source: Rabbit

Mol.Wt.: 58kDa  
Clonality: Polyclonal

Application: WB 1:500-1:2000

Reactivity: Human, Mouse

Purification: The antiserum was purified by peptide affinity chromatography using SulfoLink™ Coupling Resin (Thermo Fisher Scientific).

Specificity: cdc25C Ab detects endogenous levels of cdc25C.

Immunogen: A synthesized peptide derived from human cdc25C.

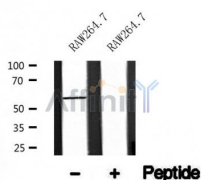
Uniprot: P30307

Subcellular Location: Nucleus.

Tissue Specificity: Expressed predominantly in G2 phase.

Similarity: Belongs to the MPI phosphatase family.

Storage Condition and Buffer: Rabbit IgG in phosphate buffered saline , pH 7.4, 150mM NaCl, 0.02% sodium azide and 50% glycerol. Store at -20 °C. Stable for 12 months from date of receipt.



Western blot analysis of cdc25C in lysates of RAW264.7, using cdc25C Ab(AF4717).

**IMPORTANT:** For western blot, incubate membrane with diluted primary Ab in 5% w/v milk , 1X TBS, 0.1% Tween@20 at 4°C with gentle shaking, overnight.

For Research Use Only. Not for use in diagnostic and therapeutic procedures. Not for resale without express authorization.