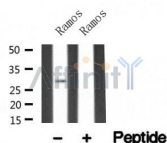


## DAPP1/BAM32 Ab

Cat.#: AF4802	Concn.: 1mg/ml	Mol.Wt.: 29kDa
Size: 50ul,100ul,200ul	Source: Rabbit	Clonality: Polyclonal

Application:	WB 1:500-1:2000
Reactivity:	Human
Purification:	The antiserum was purified by peptide affinity chromatography using SulfoLink™ Coupling Resin (Thermo Fisher Scientific).
Specificity:	DAPP1/BAM32 Ab detects endogenous levels of DAPP1/BAM32.
Immunogen:	A synthesized peptide derived from human DAPP1/BAM32.
Uniprot:	Q9UN19
Subcellular Location:	Cytoplasm. Membrane. Membrane-associated after cell stimulation leading to its translocation.
Tissue Specificity:	Highly expressed in placenta and lung, followed by brain, heart, kidney, liver, pancreas and skeletal muscle. Expressed by B-lymphocytes, but not T-lymphocytes or nonhematopoietic cells.
Storage Condition and Buffer:	Rabbit IgG in phosphate buffered saline , pH 7.4, 150mM NaCl, 0.02% sodium azide and 50% glycerol. Store at -20 °C. Stable for 12 months from date of receipt.



Western blot analysis of DAPP1/BAM32 in lysates of Ramos, using DAPP1/BAM32 Ab(AF4802).

**IMPORTANT:** For western blot, incubate membrane with diluted primary Ab in 5% w/v milk , 1X TBS, 0.1% Tween@20 at 4°C with gentle shaking, overnight.

For Research Use Only. Not for use in diagnostic and therapeutic procedures. Not for resale without express authorization.