

FAST kinase Ab

Cat.#: AF5115
Size: 100ul,200ul

Concn.: 1mg/ml
Source: Rabbit

Mol.Wt.: 61 kDa
Clonality: Polyclonal

Application: WB 1:500-1:2000

Reactivity: Human,Mouse,Rat

Purification: The antiserum was purified by peptide affinity chromatography using SulfoLink™ Coupling Resin (Thermo Fisher Scientific).

Specificity: FAST kinase Ab detects endogenous levels of total FAST kinase.

Immunogen: A synthesized peptide derived from human FAST kinase.

Uniprot: Q14296

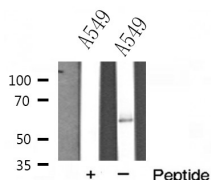
Description: Phosphorylates the splicing regulator TIA1, thereby promoting the inclusion of FAS exon 6, which leads to an mRNA encoding a pro-apoptotic form of the receptor.

Subcellular Location: Mitochondrion;

Tissue Specificity: Expressed in heart, brain, placenta, lung, liver, skeletal muscle, kidney and pancreas.

Similarity: The RAP domain is essential for RNA-binding.Belongs to the FAST protein kinase family.

Storage Condition and Buffer: Rabbit IgG in phosphate buffered saline , pH 7.4, 150mM NaCl, 0.02% sodium azide and 50% glycerol.Store at -20 °C.Stable for 12 months from date of receipt.



Western blot analysis of FAST kinase expression in A549 cells

IMPORTANT: For western blot, incubate membrane with diluted primary Ab in 5% w/v milk , 1X TBS, 0.1% Tween@20 at 4°C with gentle shaking, overnight.



Affinity Biosciences

website: www.affbiotech.com

order: order@affbiotech.com

For Research Use Only. Not for use in diagnostic and therapeutic procedures. Not for resale without express authorization.