

PERFORMANCE DATA SHEET

1846

Monoclonal anti-human CD14/Biotin*



mAb name/Clone: UCHM1

Isotype: Mouse IgG2a

Immunogen: Human thymocytes/Sezary T cells

CATALOG#: 163-030

QUANTITY: 100 µg

CONCENTRATION: 1.0 mg/ml

INFORMATION: Human CD14 is strongly expressed on myelomonocyte lineage cells including monocytes, macrophages, and a subset of granulocytes. CD14 is a high affinity receptor for complexes of lipopolysaccharide and lipopolysaccharide binding protein. A soluble form of CD14 also binds to LPS and LBP. Antibody UCHM1 recognizes a membrane bound CD14 molecule of about 53 kd. UCHM1 will also immunoprecipitate a soluble form of CD14.

References: N. Hogg, et al, (1984) Immunology **53**: 753-767. M.O. Labeta, et al, (1993) Eur J Immunol **23**: 2144-2151.

Leukocyte Typing IV (W. Knapp, et al, eds.) Oxford University Press, Oxford, (1989) "Reference Antibody".

Leukocyte Typing V (S.F. Schlossman, et al, eds.) Oxford University Press, Oxford, (1995) p. 778-788.

S.D. Wright, (1995) J Immunol **155**: 6-8.

STORAGE CONDITIONS: Store at 2 - 5°C. Freeze/thawing not recommended.

PRODUCT STABILITY: Product should retain activity for at least 12 months after shipping date when stored as recommended. Ship Date: _____

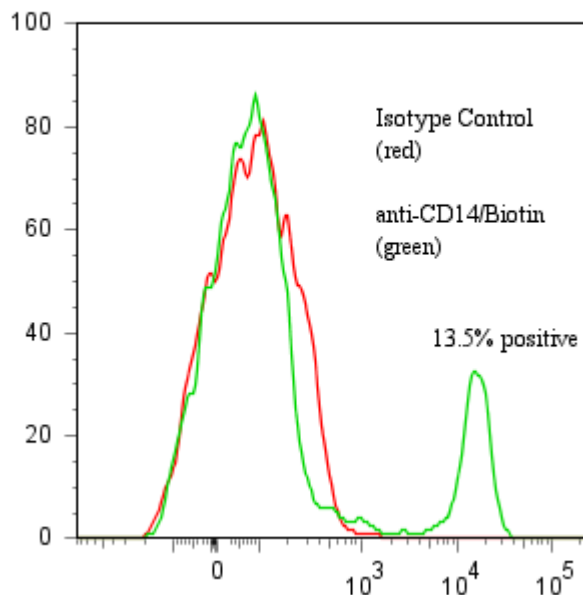
BUFFER: 50 mM Sodium Phosphate pH 7.5, 100 mM Potassium Chloride, 150mM NaCl, 5% Glycerol, 0.2% BSA, 0.04% NaN₃ (as a preservative).

PRODUCTION: Antibody from (low FBS containing) tissue culture supernatant was Protein A purified to >95% mouse immunoglobulin by SDS-PAGE (<1% bovine immunoglobulin), and reacted with NHS-Biotin.

Unconjugated Biotin was removed from conjugate using a desalting column.

PERFORMANCE: Five x 10⁵ ficoll prepared human peripheral blood mononuclear cells (PBMC) per tube were washed and pre incubated ~5 minutes with 20 µl of 250 µg/ml human IgG (to block non specific binding) after which they were incubated 45 minutes on ice with 80 µl of anti-CD14/Biotin at a concentration of 5 µg/ml. Cells were washed twice and incubated with 2^o reagent Streptavidin/R-Phycoerythrin (Catalog #253-050), after which they were washed three times, fixed and analyzed by FACS. A net 13.5% subpopulation of the cells stained positive with a mean shift of 2.11 log₁₀ fluorescent units when compared to a Mouse IgG2a/Biotin negative control (Catalog #281-030) at a similar concentration. Binding was blocked when cells were pre incubated 10 minutes with 20 µl of 0.5 mg/ml anti-CD14 antibody (Catalog #163-020).

Binding of anti-CD14/Biotin +SA/PE to human PBMC



**This Product is intended for Laboratory Research use only.*