

## PERFORMANCE DATA SHEET

1816

### *Monoclonal anti-human CD49d (VLA-4)\**

**mAb name/Clone:** BU49

**Isotype:** Mouse IgG1

**Immunogen:** Human peripheral myeloma cells

**CATALOG#:** 200-020

**QUANTITY:** 100 µg

**CONCENTRATION:** 1.0 mg/ml

**INFORMATION:** Human CD49d molecules are integrin  $\alpha 4$  chains that are expressed as heterodimers with CD29 ( $\beta 1$  integrin) or ( $\beta 7$  integrin) and function as adhesion receptors. CD49d/CD29 is mainly expressed on thymocytes and B cells with increased expression on activated T cells. The ligands for CD49d/CD29 include VCAM-1 and fibronectin. Antibody BU49 recognizes the CD49d molecule of about 145 kd.

**References:** Leukocyte Typing V (S.F. Schlossman, et al, eds.) Oxford University Press, Oxford, (1995) p. 1617-1618.  
T. Sato, (1995) J Immunol **155**: 2938-2947.

**STORAGE CONDITIONS:** *Store at 2 - 5°C.* Freeze/Thawing is not recommended.

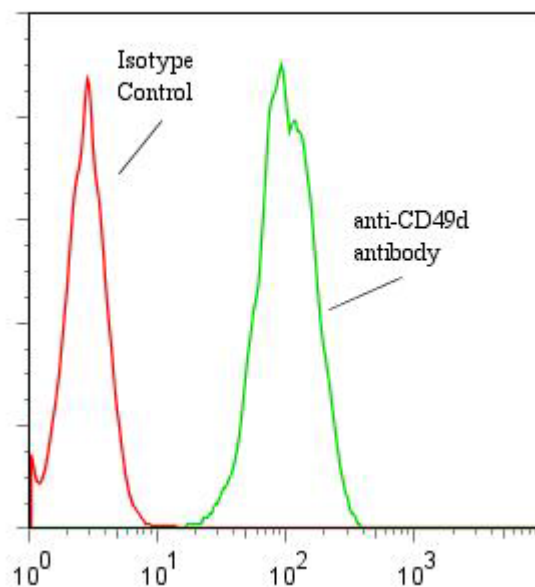
**PRODUCT STABILITY:** Product should retain activity for at least 12 months after shipping date when stored as recommended. Ship Date: \_\_\_\_\_

**BUFFER:** 50 mM Sodium Phosphate pH 7.5, 100 mM Potassium Chloride, 150mM NaCl, 0.5 mg/ml Gentamicin Sulfate (as a preservative).

**PRODUCTION:** Antibody was Protein A purified from (low FBS containing) tissue culture supernatant. Purity was >95% Immunoglobulin by SDS-PAGE with less than 1% Bovine Immunoglobulin.

**PERFORMANCE:** Five x 10<sup>5</sup> cultured **HPB-MLT** human tumor cells were washed incubated 45 minutes on ice with 80 µl of anti-CD49d antibody diluted to **5 µg/ml**. Cells were washed twice and incubated with 2<sup>o</sup> reagent Goat anti-Mouse IgG/FITC (Catalog #232-011), after which they were washed three times, fixed and analyzed by FACS. Cells stained positive with a mean shift of **1.52 log<sub>10</sub>** fluorescent units when compared to a Mouse IgG1 negative control (Catalog #278-010) at a similar concentration.

**Binding of anti-CD49d antibody  
+GAM/FITC to human HPB-MLT**



*\*This Product is intended for Laboratory Research use only.*