

PERFORMANCE DATA SHEET

1817

*Monoclonal anti-human CD59(Protectin)/FITC**

mAb name/Clone: BRA-10G

Isotype: Mouse IgG1 κ

Immunogen: Human K562 tumor cells

CATALOG#: 211-040

QUANTITY: 120 tests

VOLUME IN VIAL: 0.2ml

WORKING DILUTION: 1:50 (or use 1.6 μ l of concentrated stock per 5 x 10⁵-cell test)

INFORMATION: Human CD59 is a GPI anchored molecule that protects cells from complement-mediated lysis (1). Studies are progressing to determine the regulatory mechanism for CD59 expression (2). Antibody BRA-10G reacts with the 18-22 kD CD59 molecule.

References: (1) Leukocyte Typing V (S.F. Schlossman, et al, eds.) Oxford University Press, Oxford (1995) p. 1476-1477. (2) M.H. Holguin, et al, (1996) J Immunol 157: 1659-1668.

STORAGE CONDITIONS: Store at 2 - 5°C. Freeze/Thawing is not recommended. Protect from light.

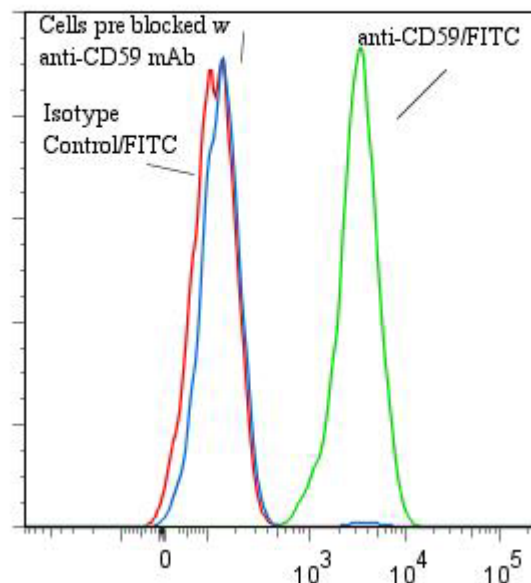
PRODUCT STABILITY: Product should retain activity for at least 12 months after shipping date when stored as recommended. Ship Date: _____

BUFFER: 50 mM Sodium Phosphate pH 7.5, 100 mM Potassium Chloride, 150mM NaCl, 5% Glycerol, 0.2% BSA, 0.04% NaN₃ (as a preservative).

PRODUCTION: Protein A purified antibody from tissue culture supernatant was reacted with FITC. Unconjugated FITC was separated from antibody/FITC conjugate by desalting column. The antibody/FITC conjugate is at 0.5 mg/ml with a Fluorescein/IgG molar ratio of 2.7.

PERFORMANCE: Five x 10⁵ cultured HPB-MLT cells were washed and incubated 45 minutes on ice with 80 μ l of anti-CD59/FITC at a 1:50 dilution factor (10 μ g/ml). Cells were washed three times, fixed and analyzed by FACS. Cells stained positive with a mean shift of 1.44 log₁₀ fluorescent units when compared to a Mouse IgG1/FITC negative control (Catalog #278-040) at a similar concentration. Binding was blocked when cells were pre incubated 10 minutes with 20 μ l of 0.5 mg/ml anti-CD59 antibody (Catalog #211-020).

Binding of anti-CD59/FITC to human HPB-MLT cells



**This Product is intended for Laboratory Research use only.*