

## PERFORMANCE DATA SHEET

1822

### *Monoclonal anti-human CD100/Biotin\**

**mAb name/Clone:** 133-1C6

**Isotype:** Mouse IgM

**Immunogen:** PHA stimulated human PBL

**CATALOG#:** 321-030

**QUANTITY:** 100 µg

**CONCENTRATION:** 1.0 mg/ml

**INFORMATION:** Human CD100 is a transmembrane glycoprotein that belongs to the semaphorin gene family and is found on most hematopoietic cells except RBC, platelets and immature bone marrow cells. CD100 plays a key role in lymphocyte activation (2, 3). Antibody 133-1C6 recognizes a CD100 molecule of about 150 kd.

**References:** 1)Leukocyte Typing VI (T. Kishimoto, et al, eds.) Garland Publishing, Inc., New York (1997) p. 534-539. 2)K.T. Hall, et al, (1996) Proc Natl Acad Sci USA 93:11780-11785. 3)A. Elhabazi, et al, (1997) J Biol Chem 272: 23515-23520.

**STORAGE CONDITIONS:** *Store at 2 - 5°C.* Freeze/thawing not recommended.

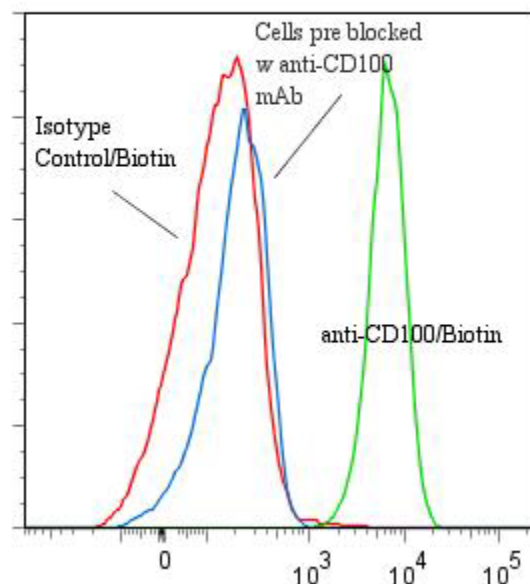
**PRODUCT STABILITY:** Product should retain activity for at least 12 months after shipping date when stored as recommended. Ship Date:\_\_\_\_\_

**BUFFER:** 50 mM Sodium Phosphate pH 7.5, 500 mM Potassium Chloride, 150mM NaCl, 5% Glycerol, 0.2% BSA, 0.04% Na<sub>2</sub>S<sub>2</sub>O<sub>3</sub> (as a preservative).

**PRODUCTION:** Antibody from (low FBS containing) tissue culture supernatant was Protein A purified to >95% mouse immunoglobulin by SDS-PAGE (<1% bovine immunoglobulin), and reacted with NHS-Biotin. Unconjugated Biotin was removed from conjugate using a desalting column.

**PERFORMANCE:** Five x 10<sup>5</sup> cultured human HPB-MLT cells per tube were washed and incubated 45 minutes on ice with 80 µl of anti-CD100/Biotin at 5 µg/ml. Cells were washed twice and incubated with 2° reagent Streptavidin/R-Phycoerythrin (Catalog #253-050), after which they were washed three times, fixed and analyzed by FACS. Cells stained positive with a mean shift of 1.43 log<sub>10</sub> fluorescent units when compared to a Mouse IgM/Biotin negative control (Catalog #290-030) at a similar concentration. Binding was blocked when cells were pre incubated 10 minutes with 20 µl of 0.5 mg/ml anti-CD100 antibody (Catalog #321-020).

#### **Binding of anti-CD100/Biotin + SA/PE to human HPB-MLT cells**



*\*This Product is intended for Laboratory Research use only.*