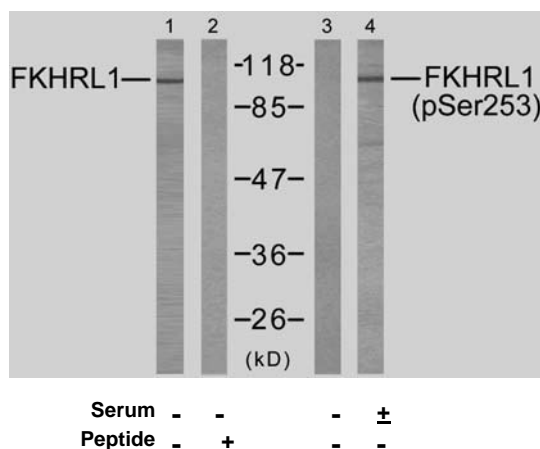


## Rabbit anti FKHRL1 (Ab-253)

- Catalog Number:** AP21171
- Amount:** 100µl (for 10 Western Blotting)
- Form of Antibody:** Rabbit IgG in phosphate buffered saline (without Mg<sup>2+</sup> and Ca<sup>2+</sup>), pH 7.4, 150mM NaCl, 0.02% sodium azide and 50% glycerol.
- Storage/Stability:** Store at -20°C/1 year
- Immunogen:** The antiserum was produced against synthesized non-phosphopeptide derived from human FKHRL1 around the phosphorylation site of serine 253 (A-V-S<sup>P</sup>-M-D).
- Purification:** The antibody was affinity-purified from rabbit antiserum by affinity-chromatography using epitope-specific immunogen.
- Specificity/Sensitivity:** FKHRL1 (Ab-253) antibody detects endogenous levels of total FKHRL1 protein.
- Reactivity:** Human, Mouse, Rat
- Applications:** WB: 1:1000
- Swiss-Prot No. :** O43524
- References:** Smith WW, et al. (2005) J Cell Biol; 169(2): 331-9.  
Essafi A, et al. (2005) Oncogene; 24(14): 2317-29.  
Brunet A, et al. (2001) Mol Cell Biol; 21(3): 952-65.  
Brunet A, et al. (1999) Cell; 96(6): 857-68.



Western blot analysis of extracts from NIH/3T3 cells using FKHRL1 (Ab-253) antibody (AP21171, Lane 1 and 2) and FKHRL1 (phospho-Ser253) antibody (pAP11157, Lane 3 and 4).

**For Research Use Only**

Contact & Ordering Information: Angio-Proteomie, 11 Park Drive, Suite 12, Boston, MA 02215, USA. Fax: (480) 247-4337, [angioproteomie@gmail.com](mailto:angioproteomie@gmail.com)