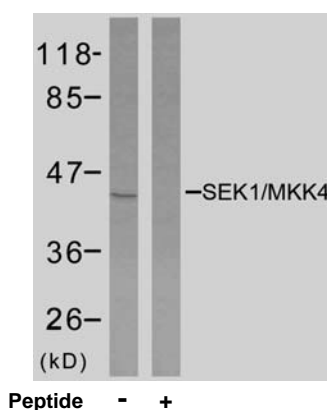


Rabbit anti SEK1/MKK4 (Ab-80)

- Catalog Number:** AP21132
Amount: 100µl (For 10 Western Blotting)
Form of Antibody: Rabbit IgG in phosphate buffered saline (without Mg^{2+} and Ca^{2+}), pH 7.4, 150mM NaCl, 0.02% sodium azide and 50% glycerol.
Storage/Stability: Store at -20°C/1 year
Immunogen: The antiserum was produced against synthesized non-phosphopeptide derived from human SEK1/MKK4 around the phosphorylation site of serine 80 (T-H-S^P-I-E).
Purification: The antibody was affinity-purified from rabbit antiserum by affinity-chromatography using epitope-specific immunogen.
Specificity/Sensitivity: SEK1/MKK4 (Ab-80) antibody detects endogenous levels of total SEK1/MKK4 protein.
Reactivity: Human, Mouse, Rat
Applications: WB: 1:1000
Swiss-Prot No. : P45985
References: Park HS, et al. (2002) J Biol Chem; 277(4): 2573-8.



Western blot analysis of extracts from NIH/3T3 cells using SEK1/MKK4 (Ab-80) antibody (AP21132).

For Research Use Only

Contact & Ordering Information: Angio-Proteomie, 11 Park Drive, Suite 12, Boston, MA 02215, USA. Fax: (480) 247-4337, angioproteomie@gmail.com