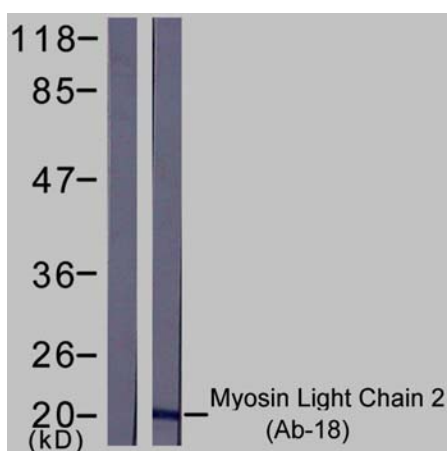


## Rabbit anti Myosin Light Chain 2 (Ab-18)

- Catalog Number:** AP21157  
**Amount:** 100µl (For 10 Western Blotting)  
**Swiss-Prot No. :** P78527  
**Form of Antibody:** Rabbit IgG in phosphate buffered saline (without  $Mg^{2+}$  and  $Ca^{2+}$ ), pH 7.4, 150mM NaCl, 0.02% sodium azide and 50% glycerol.  
**Storage/Stability:** Store at -20°C/1 year  
**Immunogen:** The antiserum was produced against synthesized non-phosphopeptide derived from mouse Myosin Light Chain 2 around the phosphorylation site of serine 18 (A-T-S<sup>P</sup>-N-V).  
**Purification:** The antibody was affinity-purified from rabbit antiserum by affinity-chromatography using epitope-specific immunogen.  
**Specificity/Sensitivity:** Myosin Light Chain 2 (Ab-18) antibody detects endogenous levels of total Myosin Light Chain 2 protein.  
**Reactivity:** Human, Mouse, Rat  
**Applications:** WB: 1:1000  
**References:** Janiak A, et al. (2006) Mol Biol Cell. Apr; 17(4): 1606-1619.  
Croft DR, et al. (2006) Mol Cell Biol. 2 Jun; 26(12): 4612-4627  
Li Z, et al. (2006) Mol Cell Biol. Jun; 26(11): 4240-4256



Western blot analysis of extract from K562 cells, using Myosin Light Chain 2 (Ab-18) antibody (AP21157).

**For Research Use Only**

Contact & Ordering Information: Angio-Proteomie, 11 Park Drive, Suite 12, Boston, MA 02215, USA. Fax: (480) 247-4337, [angioproteomie@gmail.com](mailto:angioproteomie@gmail.com)